

Industries with the Most Expected Job Growth

Nearly 100 industry subsectors were analyzed to identify the 20 expected to have the most job growth in Georgia from 2021-2023. The 20 industries in the chart below represent well over three-fourths of the total job growth in all industry subsectors in Georgia during the projected period. The base employment, projected employment, and total job growth are listed for each industry.

Industry	2021 Base Employment	2023 Projected Employment	Employment Change
Educational Services	375,580	393,780	18,200
Management of Companies & Enterprises	85,260	101,740	16,480
Food Services & Drinking Places	343,440	359,030	15,590
Administrative & Support Services	294,550	310,100	15,550
Merchant Wholesalers, Durable Goods	106,110	119,500	13,390
Ambulatory Health Care Services	235,940	248,820	12,880
Warehousing & Storage	65,820	76,470	10,650
Hospitals	180,380	190,040	9,660
Merchant Wholesalers, Nondurable Goods	57,090	63,680	6,590
Accommodation, including Hotels & Motels	33,480	39,860	6,380
Professional, Scientific, & Technical Services	267,760	273,860	6,100
Specialty Trade Contractors	119,750	125,850	6,100
Social Assistance	73,950	79,440	5,490
Local Government, Exc Education & Hospitals	144,820	149,700	4,880
Food & Beverage Stores	96,760	101,450	4,690
Building Material & Garden Equipment & Supplies Dealers	43,530	47,990	4,460
Amusement, Gambling, & Recreation Industries	32,270	36,580	4,310
Nursing & Residential Care Facilities	58,650	62,870	4,220
Support Activities for Transportation	35,540	39,730	4,190
Motor Vehicle & Parts Dealers	65,720	69,710	3,990

Top Five Occupations within Industries with the Most Job Growth

Educational Services: elementary school teachers, except special education; middle school teachers, except special and career/technical education; teaching assistants, except postsecondary; secondary school teachers, except special and career/technical education; teachers and instructors, all other, except substitute teachers

Management of Companies and Enterprises: software developers and software quality assurance analysts and testers; project management specialists and business operations specialists, all other; personal service managers; entertainment & recreation managers, except gambling; and managers, all other; financial and investment analysts, financial risk specialists, and financial specialists, all other; engineers, all other

Food Services and Drinking Places: fast food and counter workers; waiters and waitresses; cooks, restaurant; first-line supervisors of food preparation and serving workers; cooks, fast food

Administrative and Support Services: laborers and freight, stock, and material movers, hand; janitors and cleaners, except maids and housekeeping cleaners; security guards; customer service representatives; landscaping and groundskeeping workers

Continued on the back panel

Top Five Occupations within Industries with the Most Job Growth continued

Merchant Wholesalers, Durable Goods: sales representatives, wholesale and manufacturing, except technical and scientific products; laborers and freight, stock, and material movers, hand; shipping, receiving, and traffic clerks; general and operations managers; light truck or delivery services drivers

Ambulatory Health Care Services: Medical assistants; home health and personal care aides; registered nurses; medical secretaries; receptionists and information clerks

Warehousing and Storage: laborers and freight, stock, and material movers, hand; industrial truck and tractor operators; stockers and order fillers; shipping, receiving, and traffic clerks; heavy and tractor-trailer truck drivers

Hospitals: registered nurses; nursing assistants; clinical laboratory technologists and technicians; healthcare support workers, all other; licensed practical and licensed vocational nurses

Merchant Wholesalers, Nondurable Goods: sales representatives, wholesale and manufacturing, except technical and scientific products; laborers and freight, stock, and material movers, hand; heavy and tractor-trailer truck drivers; light truck or delivery services drivers; driver/sales workers

Accommodation, including Hotels and Motels: maids and housekeeping cleaners; hotel, motel, and resort desk clerks; maintenance and repair workers, general; waiters and waitresses; lodging managers

Professional, Scientific, and Technical Services: software developers and software quality assurance analysts and testers; accountants and auditors; lawyers; paralegals and legal assistants; management analysts

Specialty Trade Contractors: electricians; construction laborers; heating, air conditioning, and refrigeration mechanics and installers; first-line supervisors of construction trades and extraction workers; plumbers, pipefitters, and steamfitters

Social Assistance: home health and personal care aides; childcare workers; preschool teachers, except special education; teaching assistants, except postsecondary; teachers and instructors, all other, except substitute teachers

Local Government, Excluding Education and Hospitals: police and sheriff's patrol officers; firefighters; first-line supervisors of police and detectives; correctional officers and jailers; recreation workers

Food and Beverage Stores: cashiers; stockers and order fillers; food preparation workers; retail salespersons; packers and packagers, hand

Building Material and Garden Equipment and Supplies Dealers: retail salespersons; cashiers; stockers and order fillers; customer service representatives; laborers and freight, stock, and material movers, hand

Amusement, Gambling, and Recreation Industries: amusement and recreation attendants; fitness trainers and aerobics instructors; landscaping and groundskeeping workers; customer service representatives; waiters and waitresses

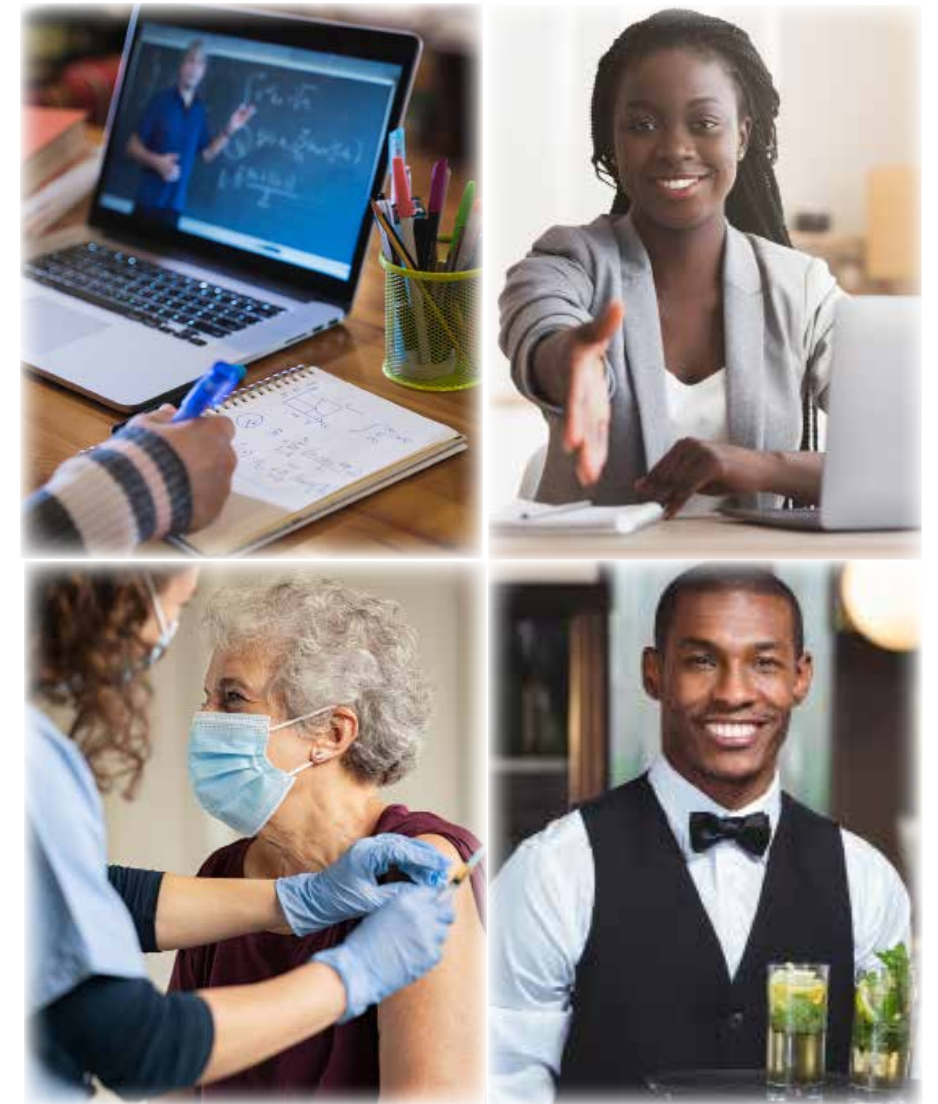
Nursing and Residential Care Facilities: nursing assistants; home health and personal care aides; licensed practical and licensed vocational nurses; registered nurses; maids and housekeeping cleaners

Support Activities for Transportation: heavy and tractor-trailer truck drivers; laborers and freight, stock, and material movers, hand; cargo and freight agents; customer service Representatives; sales representatives of services, except advertising, insurance, financial services, and travel

Motor Vehicle and Parts Dealers: automotive service technicians and mechanics; retail salespersons; parts salespersons; light truck or delivery services drivers; first-line supervisors of retail sales workers

2021 - 2023

Short-term Employment Projections



Georgia jobs expected to be in highest demand over the next two years

Georgia
DOL
DEPARTMENT OF LABOR
Bruce Thompson, Commissioner

Workforce Statistics Division

GEORGIA'S TOP JOBS BY EDUCATION AND MOST EXPECTED ANNUAL OPENINGS FOR 2021-2023

Over the 2021-2023 projection period, Georgia is forecasted to add jobs to its economy at the rate of 2.24 percent annually. The job growth comes after the state battled through the worse of the COVID-19 pandemic. This two-year job projection is relatively strong with most major industries in the state adding workers through 2023.

Over this short-term projection period, we project that nearly 202,000 occupational separations will arise each year due to labor force exits. We also estimate that about 316,000 occupational separations will occur each year because of occupational transfers. Labor force exits are workers who leave the labor force permanently and includes retirees while occupational transfers leave a job for a different occupation. During this 2021-2023 projection cycle, Georgia occupational openings (sum of net employment change and occupational separations) will top 623,000 annually while total employment is projected to increase by nearly 211,000 from 2021-2023.

This brochure lists jobs that will be in most demand from 2021- 2023. Tables show occupations with the most annual occupational openings by education level. Annual occupational separations from labor force exits and occupational transfers, along with annual wages from the 2021 Edition of Georgia Wage Estimates, are also displayed. Shown lastly are industries with the most job growth and the main occupations within them.

Doctoral or Professional Degree

Occupation	Annual Occupational Separations		Annual Openings	Annual Wage
	Labor Force Exits	Occupational Transfers		
Lawyers	490	550	1,380	\$145,900
Postsecondary Teachers, All Other	430	450	1,080	\$80,000
Health Specialties Teachers, Postsecondary	250	270	740	\$127,300
Pharmacists	170	180	520	\$123,600
Physical Therapists	130	140	480	\$92,500
Medical Scientists, Exc Epidemiologists	30	130	220	\$78,800
Dentists, General	60	30	150	\$182,900
Nursing Instructors & Teachers, Postsecondary	40	50	130	\$75,000
Business Teachers, Postsecondary	50	50	120	\$89,800
English Language & Lit Teachers, Postsecondary	50	50	120	\$63,900

Master's Degree

Occupation	Annual Occupational Separations		Annual Openings	Annual Wage
	Labor Force Exits	Occupational Transfers		
Ed, Guidance, School, & Vocational Counselors	300	540	1,080	\$60,600
Nurse Practitioners	200	300	1,080	\$110,500
Instructional Coordinators	330	290	790	\$68,700
Education Admin, Elementary & Secondary School	190	350	710	\$99,300
Physician Assistants	90	220	520	\$108,400
Healthcare Social Workers	110	240	450	\$53,800

Master's Degree Continued

Occupation	Annual Occupational Separations		Annual Openings	Annual Wage
	Labor Force Exits	Occupational Transfers		
Speech-Language Pathologists	90	140	400	\$81,300
Occupational Therapists	70	110	290	\$92,500
Education Administrators, Postsecondary	50	100	200	\$128,600
Counselors, All Other	60	110	200	\$51,100

Bachelor's Degree

Occupation	Annual Occupational Separations		Annual Openings	Annual Wage
	Labor Force Exits	Occupational Transfers		
General & Operations Managers	1,610	4,980	8,770	\$118,400
Registered Nurses	2,170	2,040	6,260	\$74,400
Accountants & Auditors	1,040	2,210	4,070	\$86,800
Elementary School Teachers, Exc Special Education	1,340	1,740	4,060	\$63,700
Market Research Analysts & Marketing Specialists	510	1,570	2,960	\$72,000
Middle School Teachers, Exc Spec & Career/Tech Ed	930	1,220	2,840	\$63,600
Human Resources Specialists	590	1,440	2,660	\$65,300
Management Analysts	670	1,190	2,380	\$99,200
Secondary School Teachers, Exc Spec & Career/Tech Ed	670	1,020	2,270	\$64,400
Financial Managers	380	940	2,020	\$148,300

Associate's Degree

Occupation	Annual Occupational Separations		Annual Openings	Annual Wage
	Labor Force Exits	Occupational Transfers		
Preschool Teachers, Exc Special Education	470	670	1,510	\$36,100
Paralegals & Legal Assistants	460	800	1,430	\$56,300
Radiologic Technologists	160	250	550	\$60,500
Physical Therapist Assistants	130	220	490	\$61,400
Electrical & Electronics Engineering Techs	110	220	410	\$70,300
Respiratory Therapists	100	120	410	\$59,000
Chemical Technicians	50	230	380	\$54,100
Human Resources Assistants, Exc Payroll & Timekeeping	100	150	290	\$43,900
Veterinary Technologists & Technicians	90	140	280	\$35,600
Diagnostic Medical Sonographers	70	110	270	\$63,500

For more information contact Workforce Statistics Division
at (404) 232-3875 • Fax (404) 232-3888
• Email: Workforce_Info@gdol.ga.gov

Postsecondary Nondegree Award

Occupation	Annual Occupational Separations		Annual Openings	Annual Wage
	Labor Force Exits	Occupational Transfers		
Heavy & Tractor-Trailer Truck Drivers	2,940	4,870	10,130	\$50,900
Medical Assistants	1,190	2,160	4,190	\$36,900
Automotive Service Technicians & Mechanics	690	1,570	2,590	\$46,800
Licensed Practical & Licensed Vocational Nurses	810	1,000	2,440	\$46,500
Hairdressers, Hairstylists, & Cosmetologists	670	710	1,480	\$37,700
Heating, Air Cond, & Refrig Mechanics & Installers	290	760	1,340	\$48,000
Telecom Equip Installers & Repairers, Exc Line Installers	330	730	1,330	\$59,800
Dental Assistants	410	630	1,230	\$44,200
Firefighters	250	580	1,040	\$41,400
Phlebotomists	220	370	760	\$36,100

Some College, No Degree

Occupation	Annual Occupational Separations		Annual Openings	Annual Wage
	Labor Force Exits	Occupational Transfers		
Bookkeeping, Accounting, & Auditing Clerks	2,250	1,960	4,780	\$44,600
Computer, Auto Teller, & Office Machine Repairers	100	260	430	\$41,100
Order Clerks	100	140	260	\$38,600

High School Diploma or Equivalent

Occupation	Annual Occupational Separations		Annual Openings	Annual Wage
	Labor Force Exits	Occupational Transfers		
Customer Service Representatives	5,190	8,680	15,910	\$36,600
Office Clerks, General	3,960	4,310	9,280	\$36,700
Secretaries & Admin Assistants, Exc Legal, Medical, & Executive	3,290	3,610	7,440	\$36,400
Sales Reps, Wholesale & Manufacturing, Exc Tech & Scientific Products	1,310	3,000	6,010	\$75,400
Supervisors of Food Prep & Serving Workers	1,480	3,380	5,740	\$36,200
Supervisors of Office & Admin Support Workers	1,680	2,760	5,300	\$60,300
Light Truck or Delivery Services Drivers	1,450	2,400	5,010	\$41,400
Maintenance & Repair Workers, General	1,480	2,440	4,890	\$41,600
Supervisors of Retail Sales Workers	1,510	2,960	4,880	\$47,100
Security Guards	1,580	2,310	4,750	\$32,400