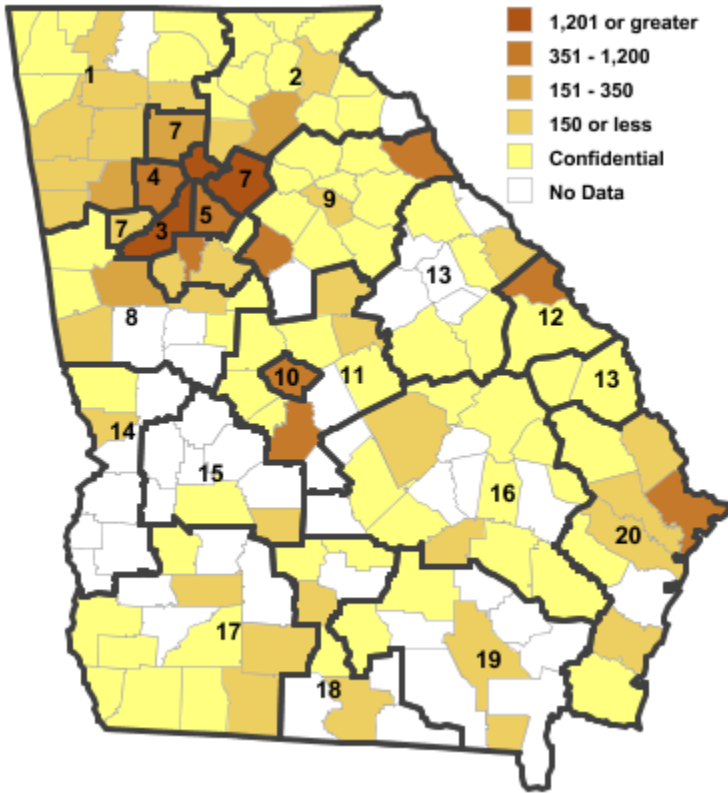


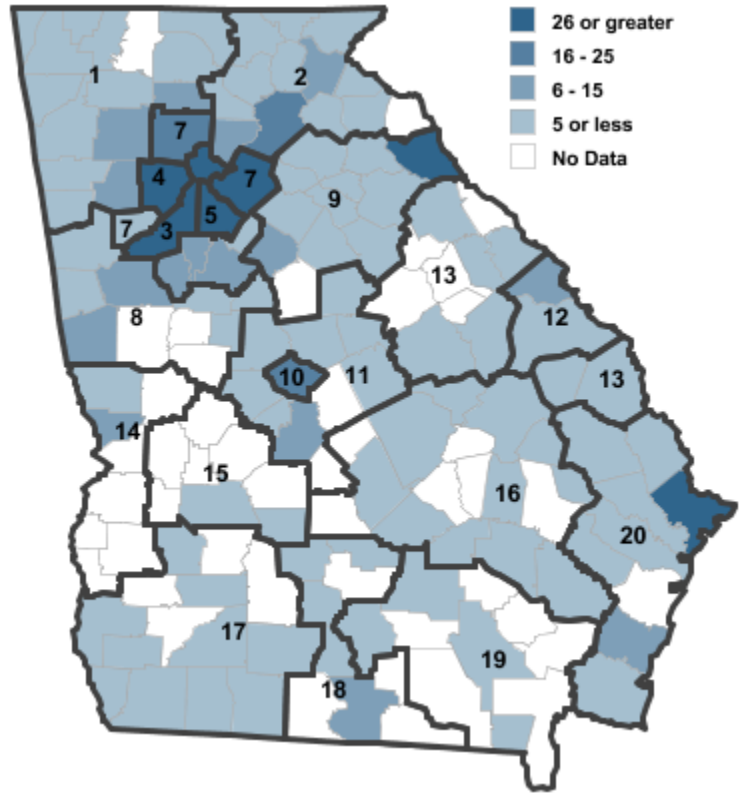
Annual Industry Averages from QCEW 2012

NAICS 327 : Nonmetallic Mineral Product Manufacturing

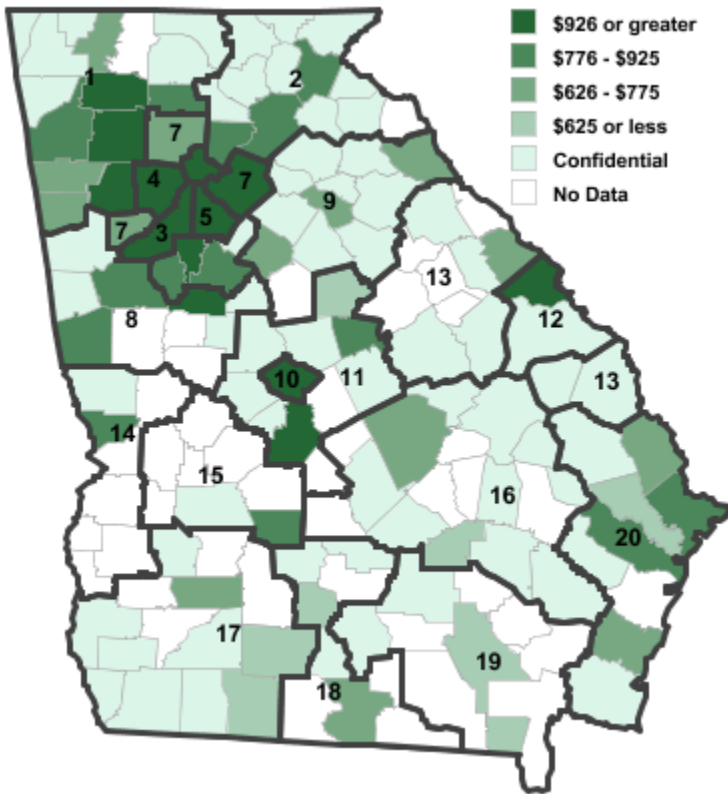
Employment



Establishments



Weekly Wages



Area

Establish- Employ- Weekly
ments ment Wages

Workforce Investment Areas

1	Northwest Georgia	51	754	\$899
2	Georgia Mountains	51	352	\$785
3	City of Atlanta	60	1,573	\$1,131
4	Cobb County	28	497	\$1,024
5	DeKalb County	36	573	\$1,006
6	Balance of Fulton County	60	1,573	\$1,131
7	Atlanta Regional	83	2,418	\$1,105
8	West Central Georgia	31	344	\$809
9	Northeast Georgia	103	2,518	\$783
10	Macon-Bibb	17	736	\$1,067
11	Middle Georgia	27	896	\$1,131
12	Richmond-Burke	9	575	\$1,144
13	East Central Georgia	13	437	\$866
14	Lower Chattahoochee	13	129	\$859
15	Middle Flint	6	132	\$665
16	Heart of Georgia-Altamaha	22	253	\$719
17	Southwest Georgia	19	209	\$596
18	South Georgia	16	201	\$643
19	Southeast Georgia	8	109	\$588
20	Coastal Georgia	56	1,000	\$794

Counties with largest values

105	Elbert	66	1,064	\$648
121	Fulton	60	1,573	\$1,131
257	Stephens	1	1	\$2,032

Note: *** Confidential - Industry group does not meet criteria for disclosure