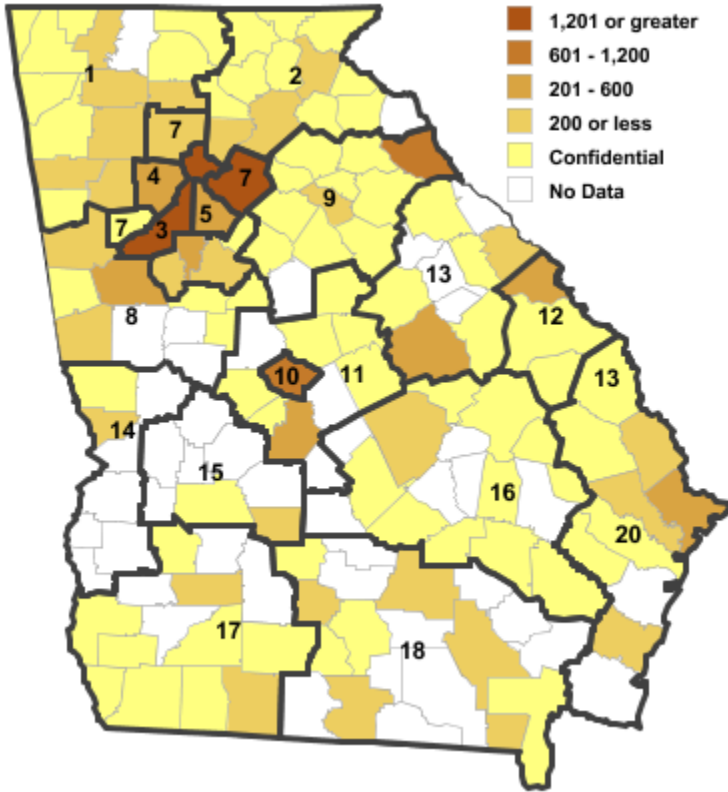


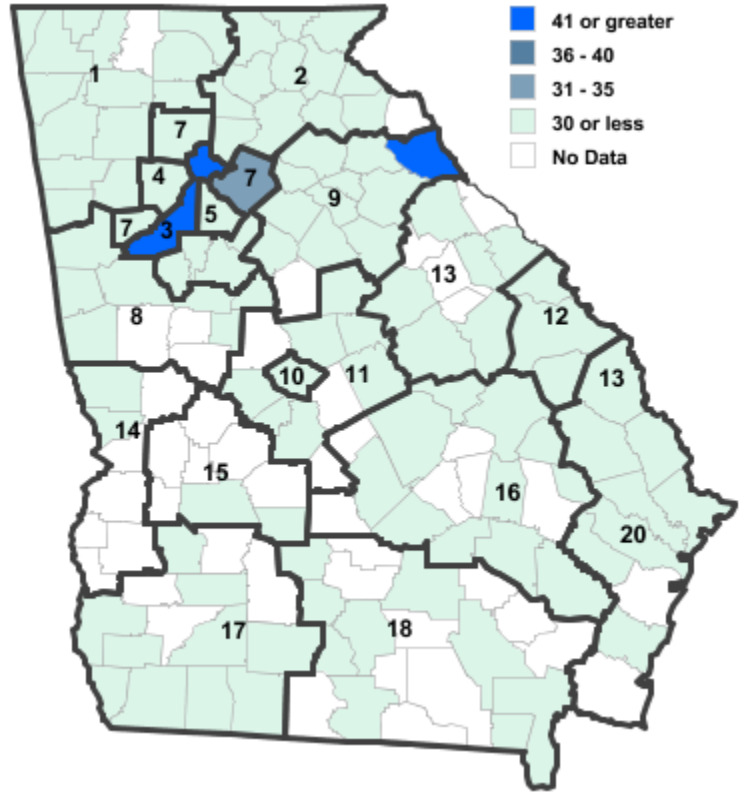
# Annual Industry Averages from QCEW 2014

## NAICS 327 : Nonmetallic Mineral Product Manufacturing

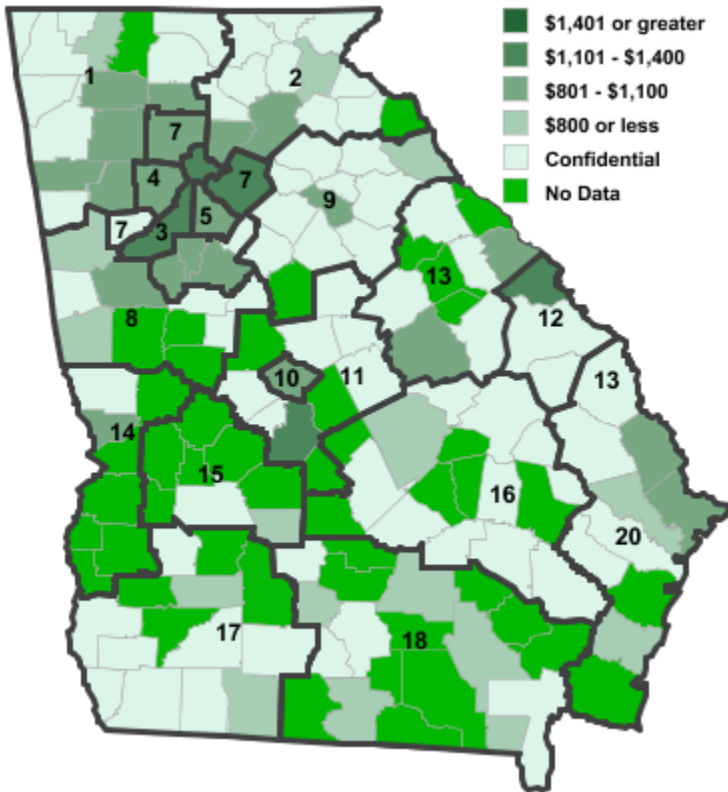
Employment



Establishments



Weekly Wages



Area

Establish- Employ- Weekly  
ments           ment   Wages

**Workforce Investment Areas**

1	Northwest Georgia	51	841	\$912
2	Georgia Mountains	50	304	\$777
3	City of Atlanta	52	1,603	\$1,187
4	Cobb County	26	559	\$1,037
5	DeKalb County	30	529	\$1,057
6	Fulton County	52	1,603	\$1,187
7	Atlanta Regional	87	<b>2,579</b>	\$1,111
8	West Central Georgia	26	404	\$885
9	Northeast Georgia	<b>91</b>	2,105	\$852
10	Macon-Bibb	14	767	\$1,017
11	Middle Georgia	22	883	<b>\$1,256</b>
12	Central Savannah River Area	11	590	\$1,161
13	East Central Georgia	12	855	\$937
14	Lower Chattahoochee	13	135	\$870
15	Middle Flint	6	67	\$670
16	Heart of Georgia-Altamaha	22	232	\$774
17	Southwest Georgia	21	207	\$651
18	Southern Georgia	22	387	\$666
20	Coastal Georgia	57	1,198	\$857

**Counties with largest values**

105	Elbert	<b>62</b>	1,077	\$676
121	Fulton	52	<b>1,603</b>	\$1,187
297	Walton	1	3	<b>\$2,172</b>

Note: \*\*\* Confidential - Industry group does not meet criteria for disclosure