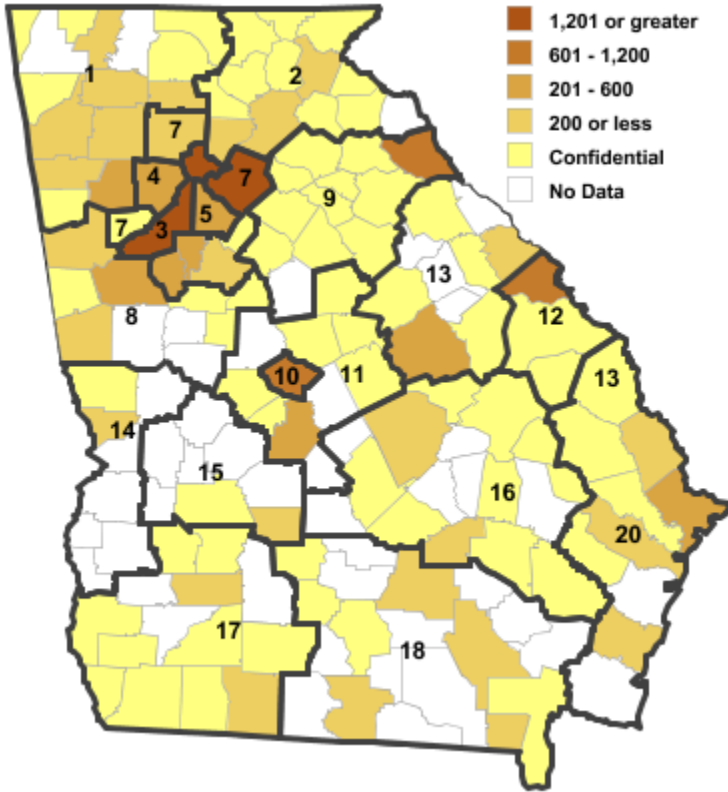


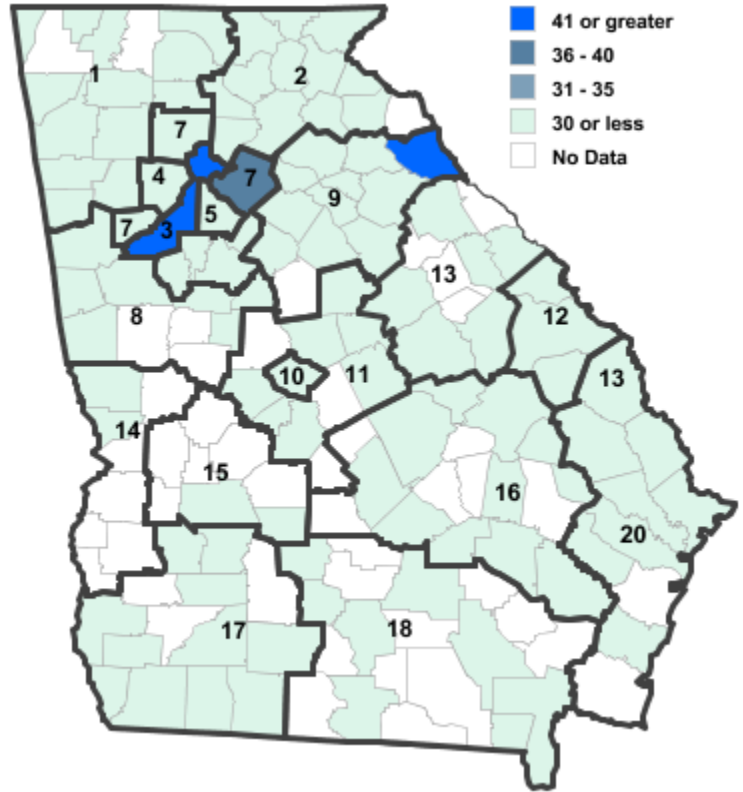
# Annual Industry Averages from QCEW 2015

## NAICS 327 : Nonmetallic Mineral Product Manufacturing

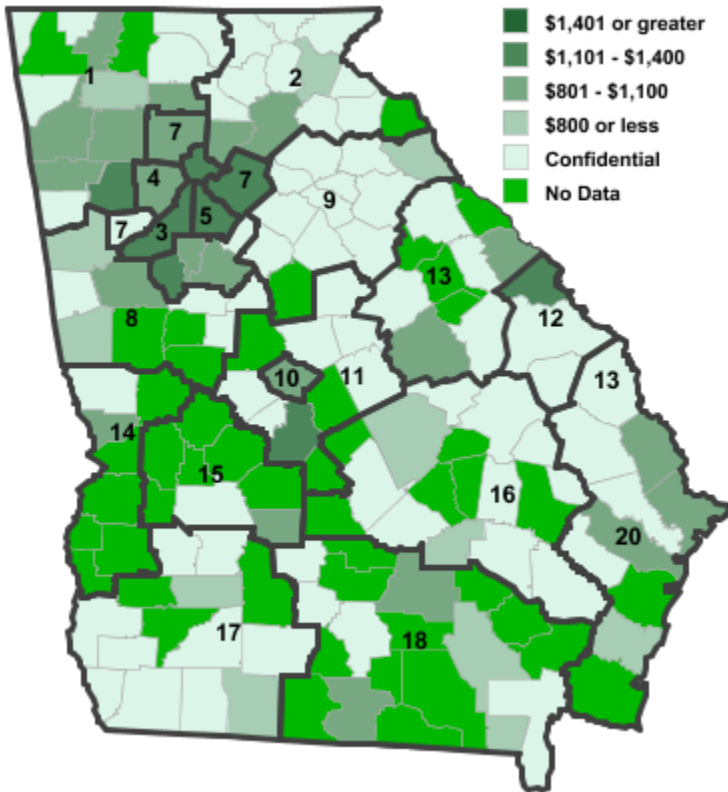
Employment



Establishments



Weekly Wages



Area

Establish- Employ- Weekly  
ments ment Wages

**Workforce Investment Areas**

1	Northwest Georgia	54	909	\$938
2	Georgia Mountains	50	346	\$810
3	City of Atlanta	51	1,686	\$1,209
4	Cobb County	28	520	\$1,066
5	DeKalb County	30	533	\$1,107
6	Fulton County	51	1,686	\$1,209
7	Atlanta Regional	93	2,910	\$1,337
8	West Central Georgia	26	432	\$882
9	Northeast Georgia	93	2,144	\$894
10	Macon-Bibb	12	958	\$1,072
11	Middle Georgia	16	844	\$1,337
12	Central Savannah River	12	628	\$1,162
13	East Central Georgia	13	812	\$926
14	Lower Chattahoochee	12	136	\$916
15	Middle Flint	6	69	\$758
16	Heart of Georgia-Altamaha	22	280	\$744
17	Southwest Georgia	21	193	\$732
18	Southern Georgia	23	410	\$763
20	Coastal Georgia	61	1,435	\$893

**Counties with largest values**

105	Elbert	63	1,101	\$702
121	Fulton	51	1,686	\$1,209
247	Rockdale	3	279	\$3,127

Note: \*\*\* Confidential - Industry group does not meet criteria for disclosure