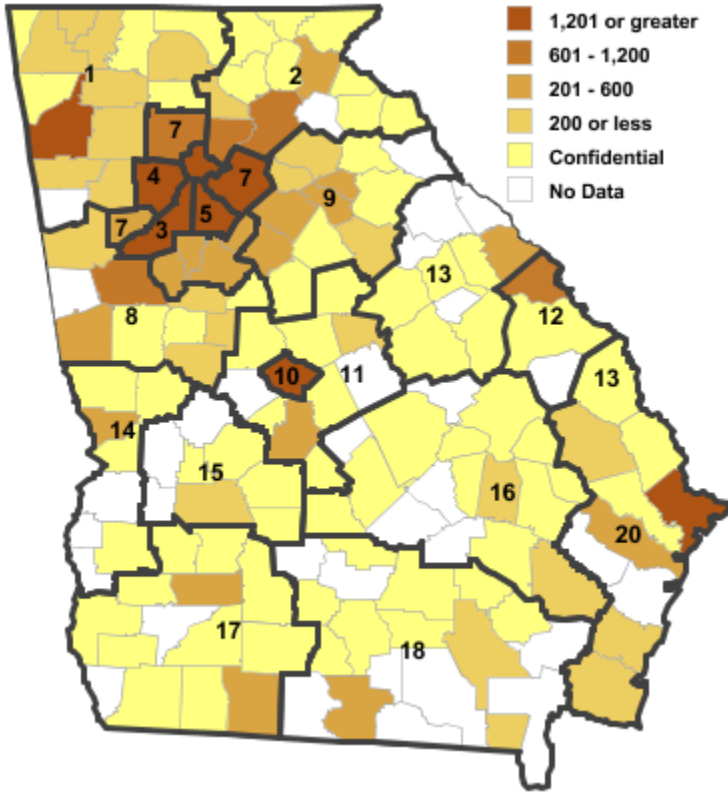


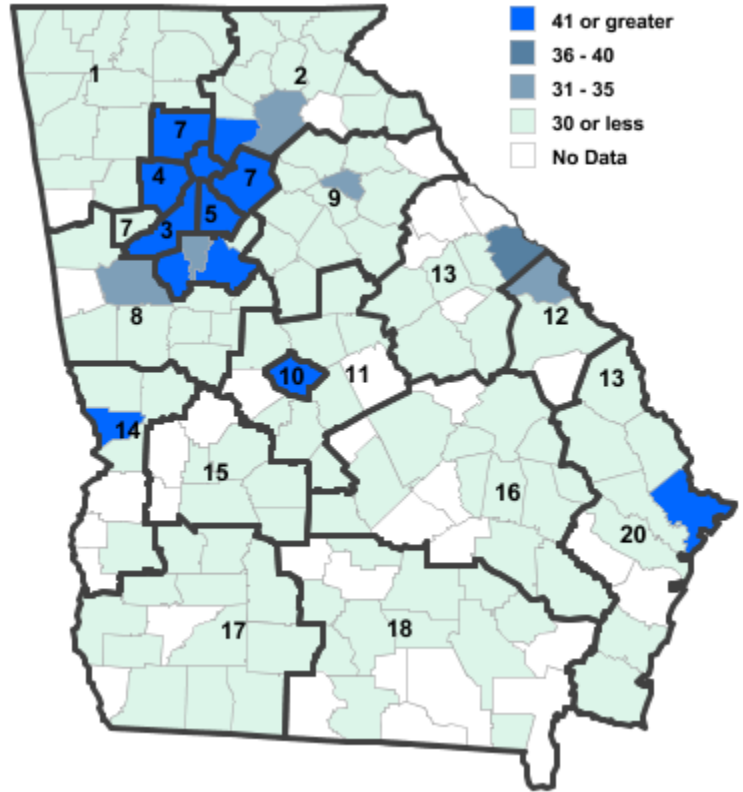
Annual Industry Averages from QCEW 2015

NAICS 61 : Educational Services

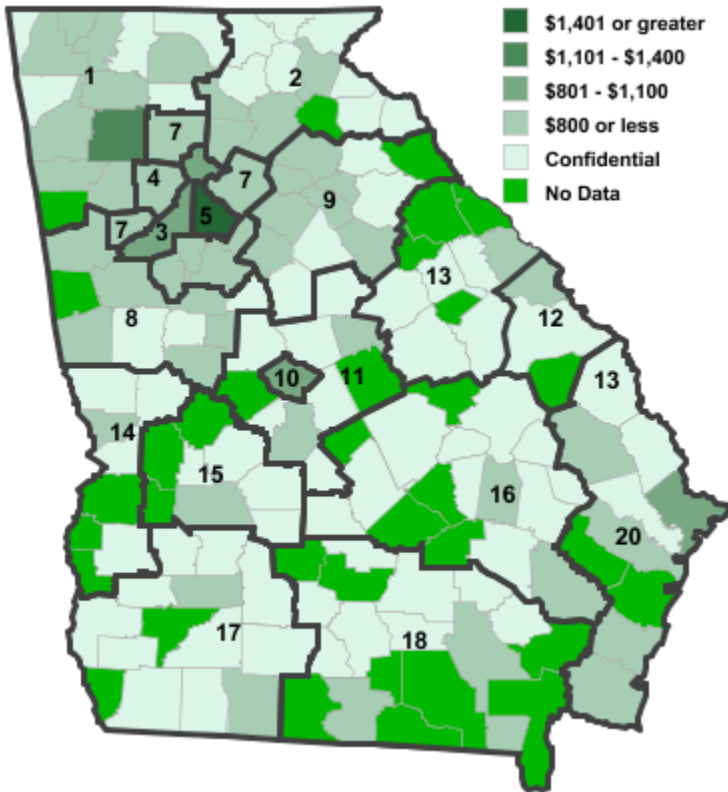
Employment



Establishments



Weekly Wages



Area

Establish- Employ- Weekly
ments ment Wages

Workforce Investment Areas

| | | | | |
|----|---------------------------|-----|--------|---------|
| 1 | Northwest Georgia | 112 | 2,200 | \$741 |
| 2 | Georgia Mountains | 170 | 3,991 | \$514 |
| 3 | City of Atlanta | 691 | 15,427 | \$932 |
| 4 | Cobb County | 347 | 4,020 | \$667 |
| 5 | DeKalb County | 316 | 17,771 | \$1,591 |
| 6 | Fulton County | 691 | 15,427 | \$932 |
| 7 | Atlanta Regional | 624 | 6,732 | \$626 |
| 8 | West Central Georgia | 89 | 1,519 | \$521 |
| 9 | Northeast Georgia | 118 | 1,628 | \$523 |
| 10 | Macon-Bibb | 48 | 2,399 | \$874 |
| 11 | Middle Georgia | 46 | 580 | \$585 |
| 12 | Central Savannah River | 37 | 763 | \$641 |
| 13 | East Central Georgia | 47 | 656 | \$482 |
| 14 | Lower Chattahoochee | 54 | 612 | \$604 |
| 15 | Middle Flint | 12 | 234 | \$502 |
| 16 | Heart of Georgia-Altamaha | 28 | 542 | \$435 |
| 17 | Southwest Georgia | 46 | 1,035 | \$602 |
| 18 | Southern Georgia | 46 | 512 | \$420 |
| 20 | Coastal Georgia | 127 | 4,021 | \$905 |

Counties with largest values

| | | | | |
|-----|--------|-----|--------|---------|
| 89 | DeKalb | 316 | 17,771 | \$1,591 |
| 121 | Fulton | 697 | 15,516 | \$931 |

Note: *** Confidential - Industry group does not meet criteria for disclosure