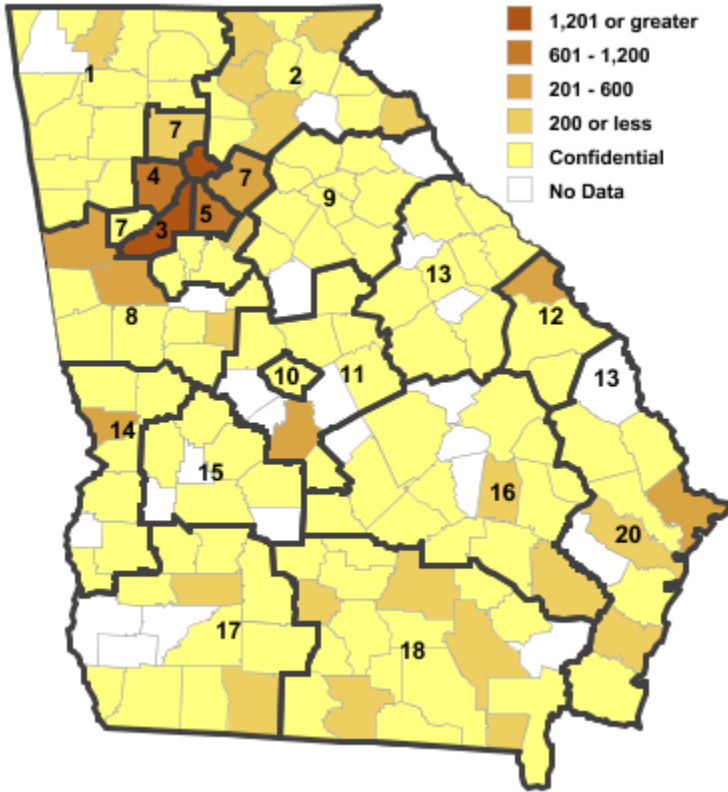


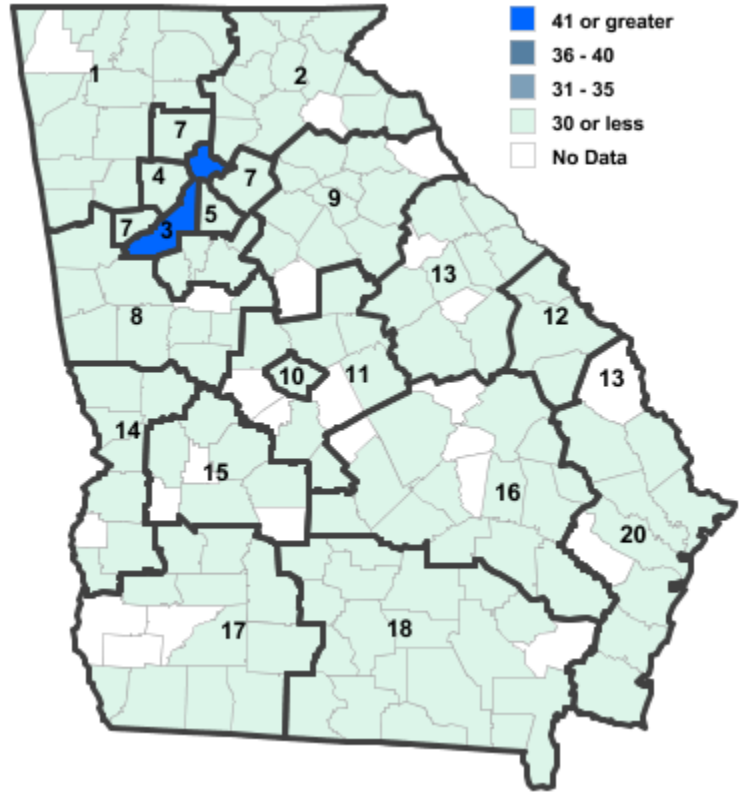
Annual Industry Averages from QCEW 2016

NAICS 22 : Utilities

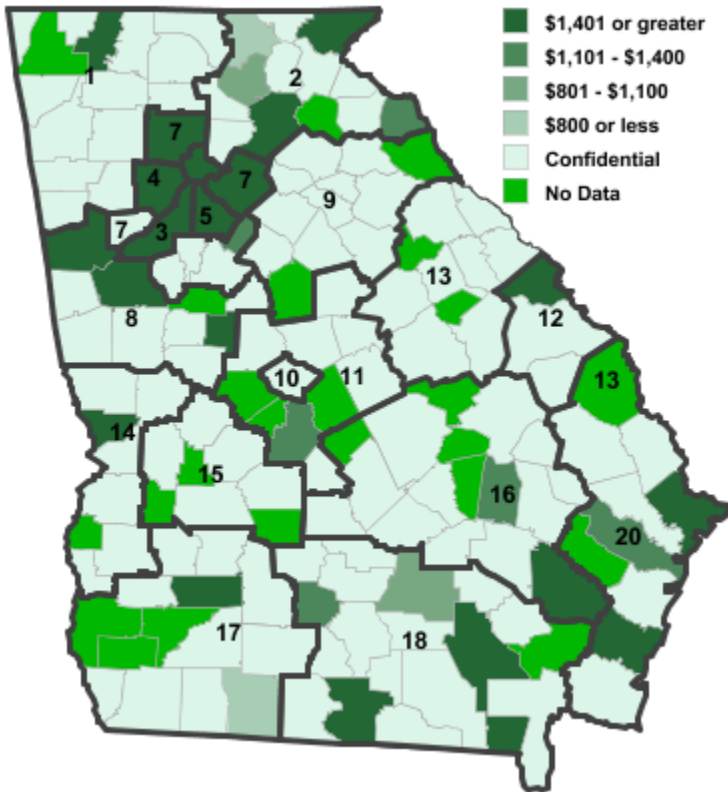
Employment



Establishments



Weekly Wages



Area

Establish- Employ- Weekly ments ment Wages

Local Workforce Development Areas

| Area | Establishments | Employment | Weekly Wages |
|------------------------------|----------------|------------|--------------|
| 1 Northwest Georgia | 30 | 1,335 | \$1,785 |
| 2 Georgia Mountains | 40 | 1,152 | \$1,346 |
| 3 City of Atlanta | 55 | 3,205 | \$2,534 |
| 4 Cobb County | 21 | 1,149 | \$1,728 |
| 5 DeKalb County | 23 | 934 | \$2,087 |
| 6 Fulton County | 55 | 3,205 | \$2,534 |
| 7 Atlanta Regional | 51 | 2,486 | \$1,517 |
| 8 West Central Georgia | 29 | 1,236 | \$1,652 |
| 9 Northeast Georgia | 26 | 1,007 | \$1,577 |
| 10 Macon-Bibb | 6 | *** | *** |
| 11 Middle Georgia | 26 | 845 | \$1,721 |
| 12 Central Savannah River | 12 | *** | *** |
| 13 East Central Georgia | 17 | 295 | \$1,435 |
| 14 Lower Chattahoochee | 15 | 269 | \$1,650 |
| 15 Middle Flint | 8 | 235 | \$1,342 |
| 16 Heart of Georgia-Altamaha | 31 | 1,658 | \$1,841 |
| 17 Southwest Georgia | 30 | 449 | \$1,300 |
| 18 Southern Georgia | 40 | 652 | \$1,292 |
| 20 Coastal Georgia | 43 | 979 | \$1,585 |

Counties with largest values

| | | | |
|-------------|----|-------|---------|
| 121 Fulton | 55 | 3,205 | \$2,534 |
| 259 Stewart | 1 | 1 | \$2,848 |

Note: *** Confidential - Industry group does not meet criteria for disclosure