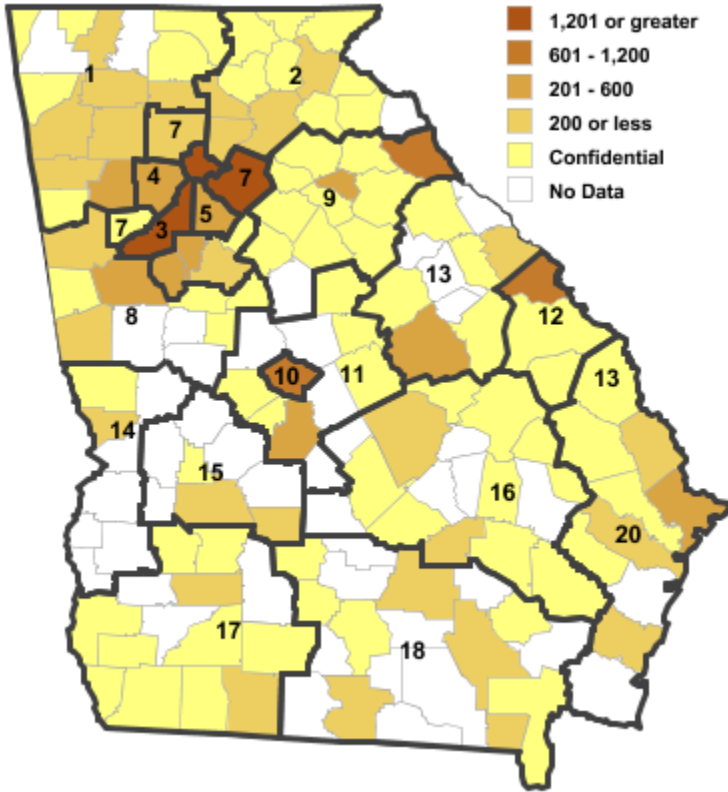


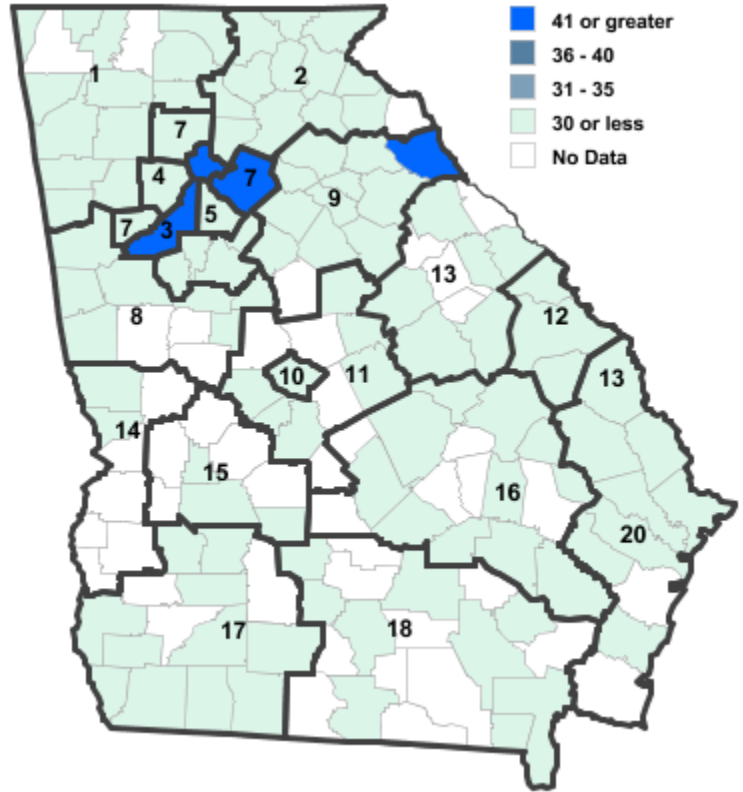
Annual Industry Averages from QCEW 2016

NAICS 327 : Nonmetallic Mineral Product Manufacturing

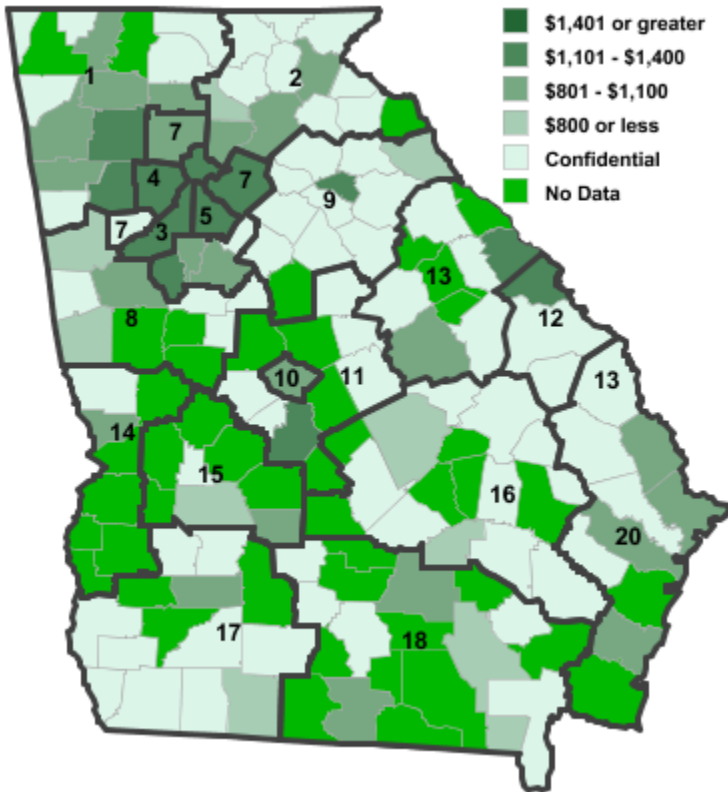
Employment



Establishments



Weekly Wages



Area

Establish- Employ- Weekly
ments ment Wages

Local Workforce Development Areas

1	Northwest Georgia	56	975	\$1,030
2	Georgia Mountains	58	406	\$861
3	City of Atlanta	54	1,924	\$1,188
4	Cobb County	29	588	\$1,109
5	DeKalb County	29	514	\$1,130
6	Fulton County	54	1,924	\$1,188
7	Atlanta Regional	96	3,057	\$1,174
8	West Central Georgia	26	465	\$939
9	Northeast Georgia	95	2,225	\$916
10	Macon-Bibb	12	970	\$1,096
11	Middle Georgia	16	725	\$1,344
12	Central Savannah River	11	608	\$1,158
13	East Central Georgia	13	740	\$957
14	Lower Chattahoochee	12	124	\$968
15	Middle Flint	7	86	\$804
16	Heart of Georgia-Altamaha	22	276	\$775
17	Southwest Georgia	22	215	\$758
18	Southern Georgia	24	441	\$799
20	Coastal Georgia	62	1,453	\$928

Counties with largest values

105	Elbert	62	1,129	\$727
121	Fulton	54	1,924	\$1,188
297	Walton	2	4	\$3,152

Note: *** Confidential - Industry group does not meet criteria for disclosure