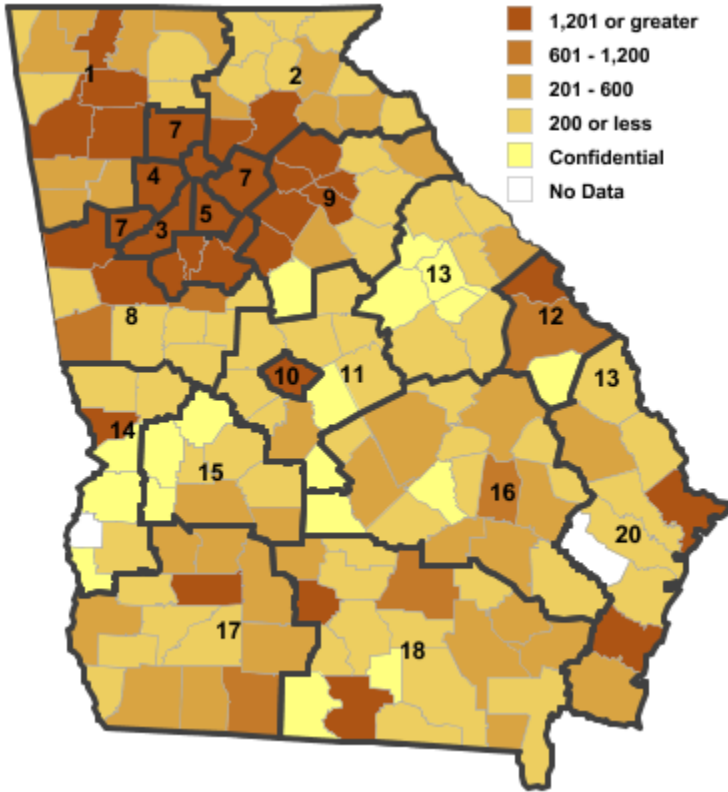


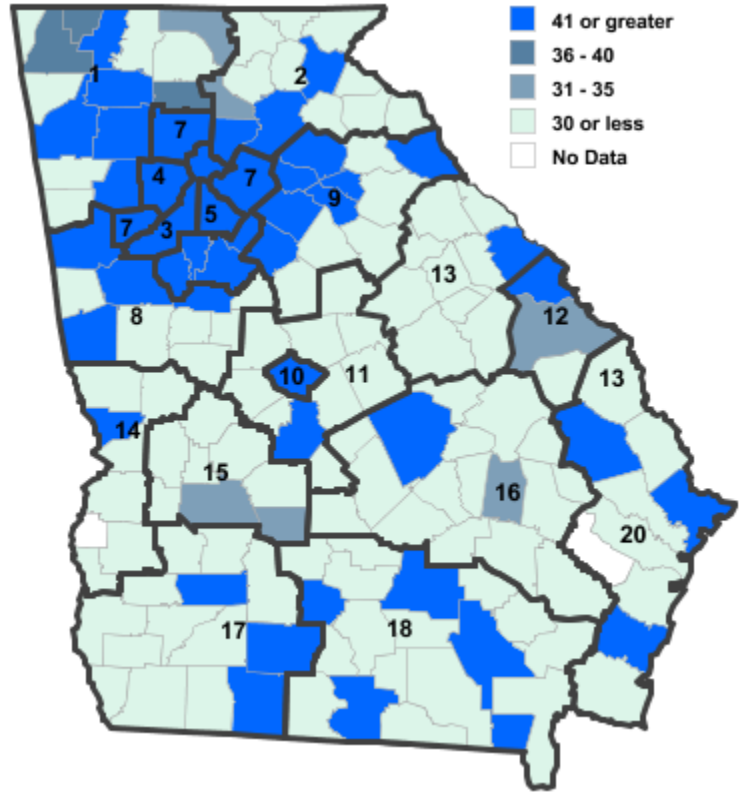
Annual Industry Averages from QCEW 2018

NAICS 42 : Wholesale Trade

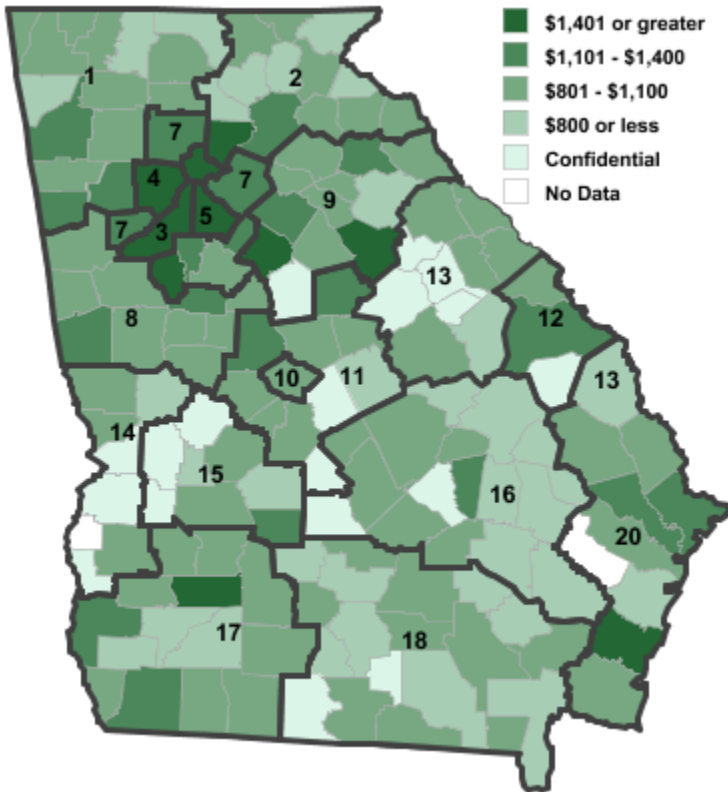
Employment



Establishments



Weekly Wages



Area

Establish- Employ- Weekly
ments ment Wages

Local Workforce Development Areas

| | | | | |
|----|---------------------------|--------------|---------------|----------------|
| 1 | Northwest Georgia | 859 | 11,284 | \$947 |
| 2 | Georgia Mountains | 1,033 | 11,563 | \$1,288 |
| 3 | City of Atlanta | 2,663 | 37,096 | \$1,838 |
| 4 | Cobb County | 1,731 | 23,341 | \$1,703 |
| 5 | DeKalb County | 1,040 | 10,692 | \$1,612 |
| 6 | Fulton County | 2,663 | 37,096 | \$1,838 |
| 7 | Atlanta Regional | 3,742 | 45,870 | \$1,329 |
| 8 | West Central Georgia | 460 | 5,018 | \$1,033 |
| 9 | Northeast Georgia | 637 | 12,505 | \$1,089 |
| 10 | Macon-Bibb | 195 | 2,338 | \$1,072 |
| 11 | Middle Georgia | 175 | 1,342 | \$978 |
| 12 | Central Savannah River | 226 | 3,635 | \$1,088 |
| 13 | East Central Georgia | 146 | 1,344 | \$962 |
| 14 | Lower Chattahoochee | 170 | 2,290 | \$984 |
| 15 | Middle Flint | 102 | 1,144 | \$1,021 |
| 16 | Heart of Georgia-Altamaha | 245 | 2,893 | \$821 |
| 17 | Southwest Georgia | 430 | 5,475 | \$1,126 |
| 18 | Southern Georgia | 435 | 5,845 | \$869 |
| 20 | Coastal Georgia | 611 | 8,144 | \$1,320 |

Counties with largest values

| | | | | |
|-----|---------------|--------------|---------------|----------------|
| 53 | Chattahoochee | 1 | 3 | \$1,948 |
| 121 | Fulton | 2,663 | 37,295 | \$1,838 |

Note: *** Confidential - Industry group does not meet criteria for disclosure