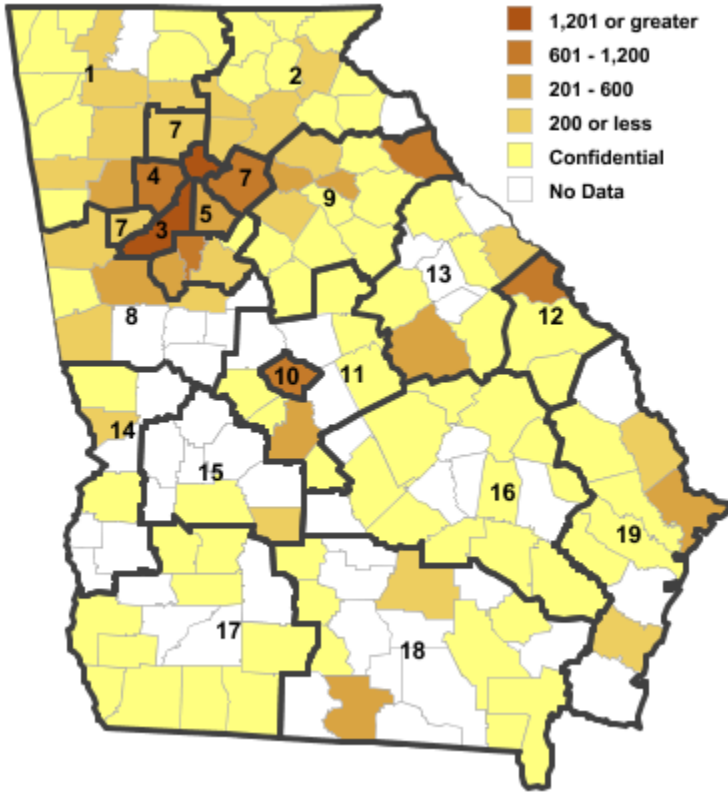


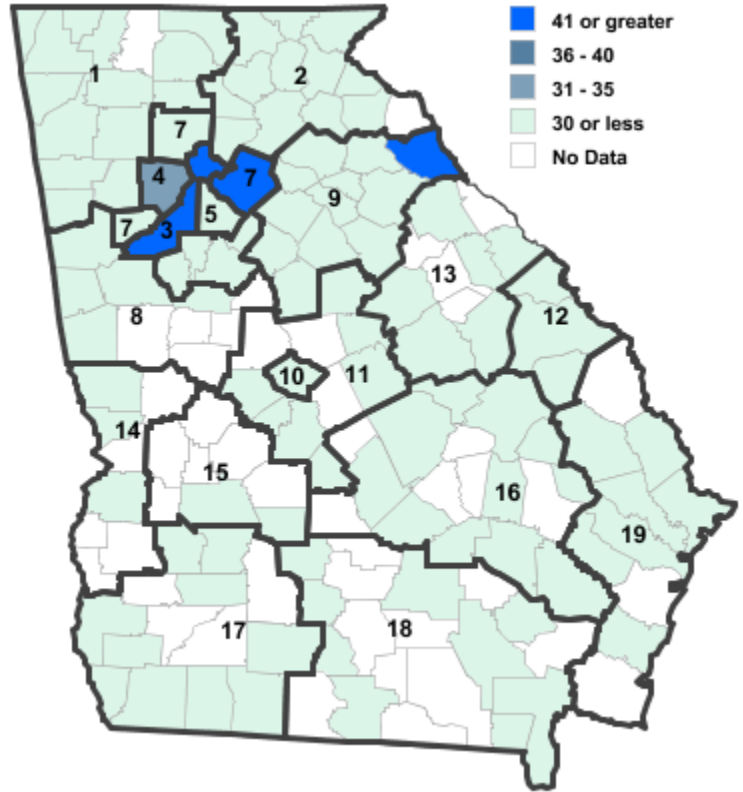
Annual Industry Averages from QCEW 2019

NAICS 327 : Nonmetallic Mineral Product Manufacturing

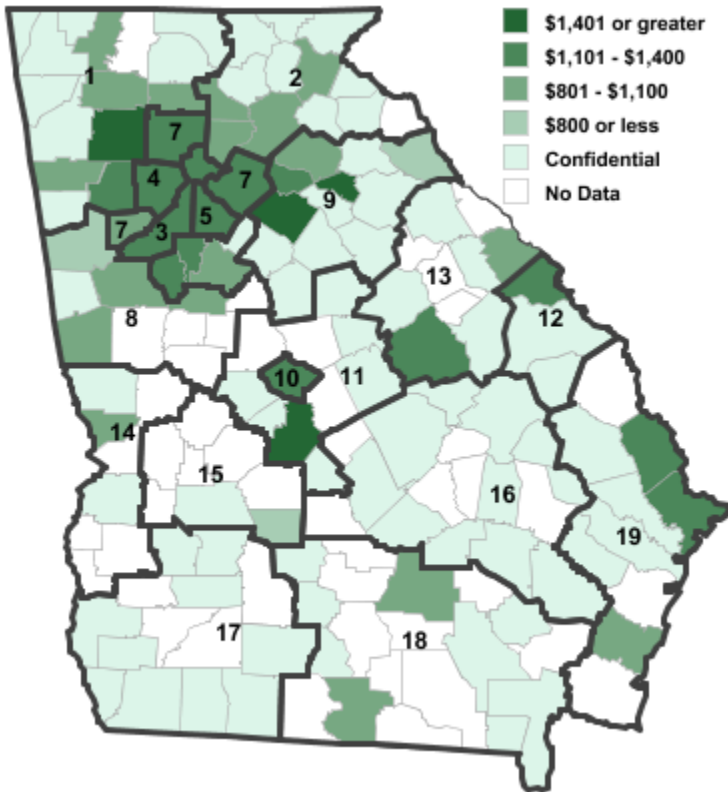
Employment



Establishments



Weekly Wages



Area

Establish- Employ- Weekly
ments ment Wages

Local Workforce Development Areas

Area	Establishments	Employment	Weekly Wages
1 Northwest Georgia	48	1,169	\$1,095
2 Georgia Mountains	52	444	\$956
3 City of Atlanta	53	1,777	\$1,389
4 Cobb County	32	627	\$1,146
5 DeKalb County	23	503	\$1,218
6 Fulton County	53	1,777	\$1,389
7 Atlanta Regional	101	2,628	\$1,193
8 West Central Georgia	23	448	\$1,031
9 Northeast Georgia	87	2,007	\$1,002
10 Macon-Bibb	11	1,127	\$1,144
11 Middle Georgia	13	590	\$1,345
12 Central Savannah River	11	701	\$1,178
13 East Central Georgia	12	631	\$1,036
14 Lower Chattahoochee	12	125	\$983
15 Middle Flint	5	48	\$693
16 Heart of Georgia-Altamaha	20	529	\$848
17 Southwest Georgia	17	231	\$880
18 Southern Georgia	20	447	\$904
19 Coastal Georgia	51	1,500	\$1,006

Counties with largest values

121 Fulton	53	1,777	\$1,389
297 Walton	3	12	\$1,612

Note: *** Confidential - Industry group does not meet criteria for disclosure