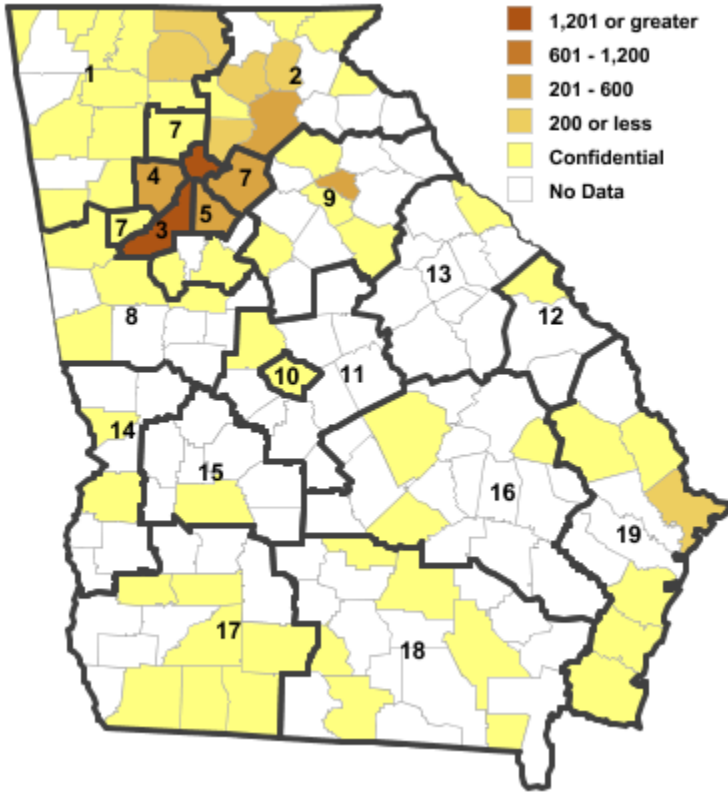


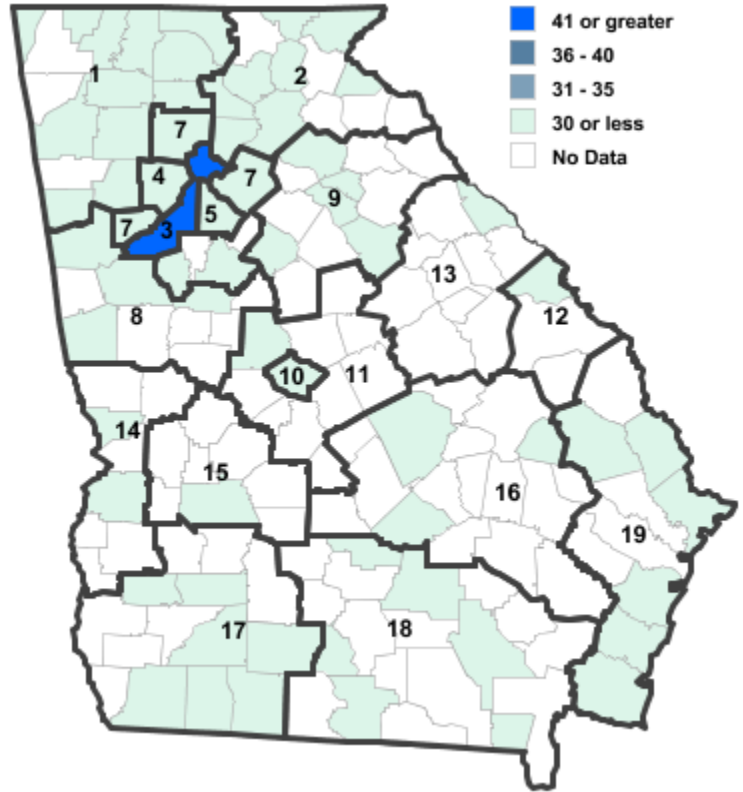
# Annual Industry Averages from QCEW 2020

## NAICS 312 : Beverage and Tobacco Product Manufacturing

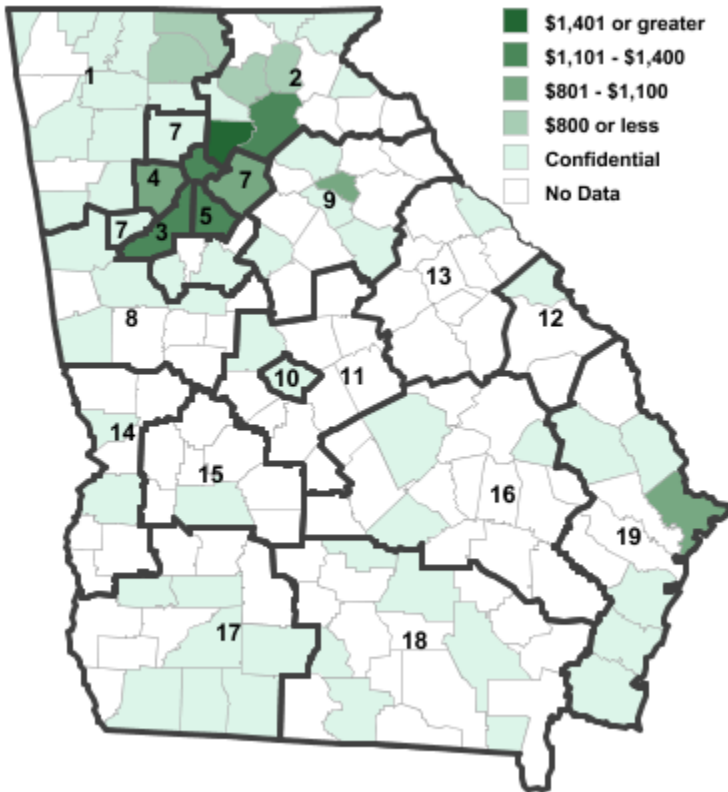
**Employment**



**Establishments**



**Weekly Wages**



**Area**

**Establish- Employ- Weekly  
ments            ment    Wages**

**Local Workforce Development Areas**

1	Northwest Georgia	23	619	\$1,673
2	Georgia Mountains	35	568	\$968
3	City of Atlanta	47	2,266	\$1,109
4	Cobb County	19	316	\$930
5	DeKalb County	13	566	\$1,117
6	Fulton County	47	2,266	\$1,109
7	Atlanta Regional	21	412	\$1,038
8	West Central Georgia	8	80	\$566
9	Northeast Georgia	12	331	\$829
10	Macon-Bibb	2	***	***
11	Middle Georgia	1	***	***
12	Central Savannah River	5	***	***
13	East Central Georgia	1	***	***
14	Lower Chattahoochee	4	***	***
15	Middle Flint	1	***	***
16	Heart of Georgia-Altamaha	3	***	***
17	Southwest Georgia	12	***	***
18	Southern Georgia	7	279	\$778
19	Coastal Georgia	16	134	\$748

**Counties with largest values**

47	Catoosa	2	23	\$2,370
121	Fulton	47	2,266	\$1,109

Note: \*\*\* Confidential - Industry group does not meet criteria for disclosure