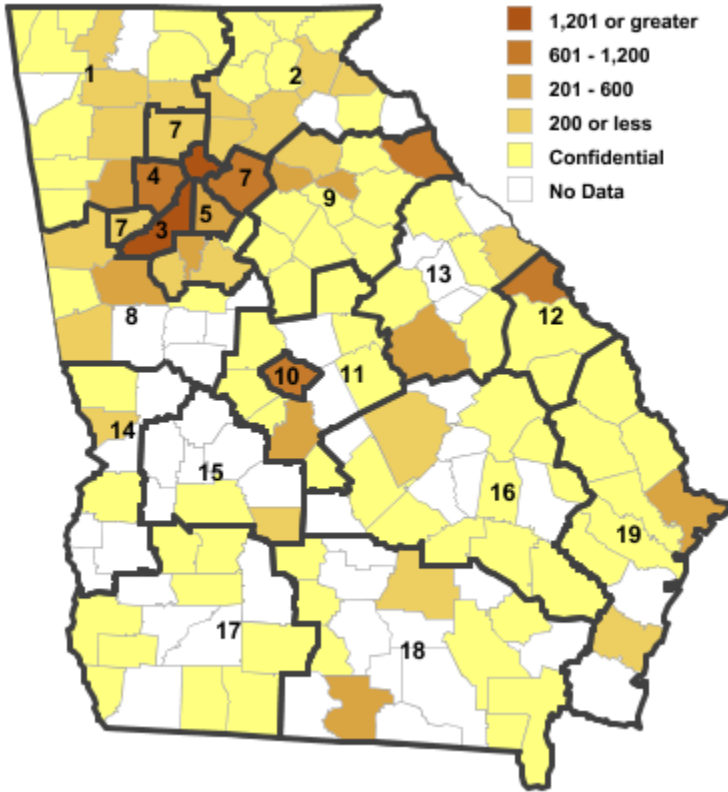


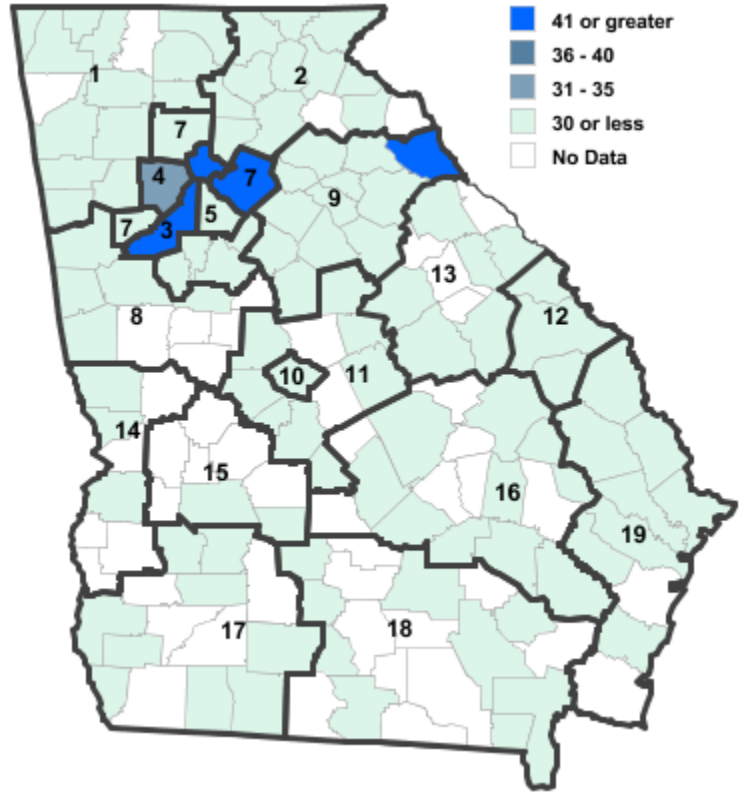
Annual Industry Averages from QCEW 2020

NAICS 327 : Nonmetallic Mineral Product Manufacturing

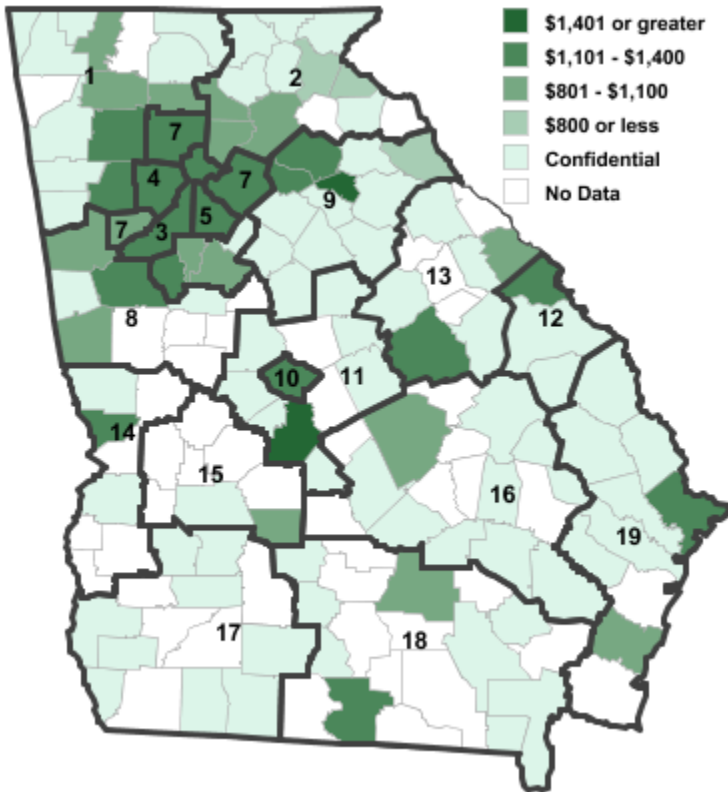
Employment



Establishments



Weekly Wages



Area

Establish- Employ- Weekly ments ment Wages

Local Workforce Development Areas

1	Northwest Georgia	48	1,122	\$1,095
2	Georgia Mountains	52	441	\$970
3	City of Atlanta	55	1,720	\$1,394
4	Cobb County	32	603	\$1,136
5	DeKalb County	25	516	\$1,216
6	Fulton County	55	1,720	\$1,394
7	Atlanta Regional	97	2,590	\$1,208
8	West Central Georgia	23	452	\$1,034
9	Northeast Georgia	93	2,003	\$1,038
10	Macon-Bibb	11	1,086	\$1,268
11	Middle Georgia	16	572	\$1,371
12	Central Savannah River	12	633	\$1,268
13	East Central Georgia	13	618	\$1,011
14	Lower Chattahoochee	13	122	\$1,049
15	Middle Flint	5	49	\$789
16	Heart of Georgia-Altamaha	22	334	\$1,018
17	Southwest Georgia	17	263	\$971
18	Southern Georgia	22	509	\$971
19	Coastal Georgia	50	1,260	\$1,014

Counties with largest values

105	Elbert	55	878	\$795
111	Fannin	1	1	\$2,477
121	Fulton	55	1,720	\$1,394

Note: *** Confidential - Industry group does not meet criteria for disclosure