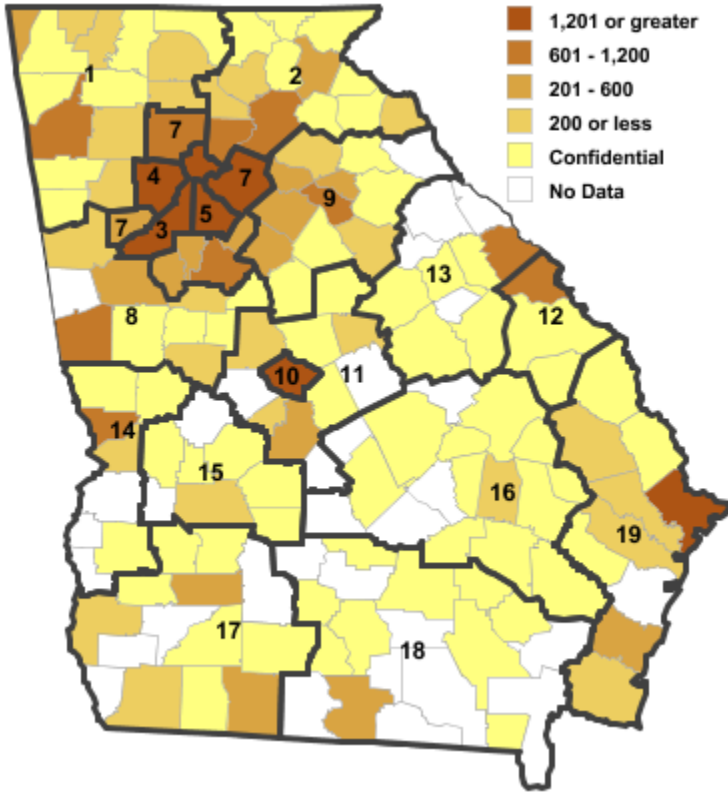


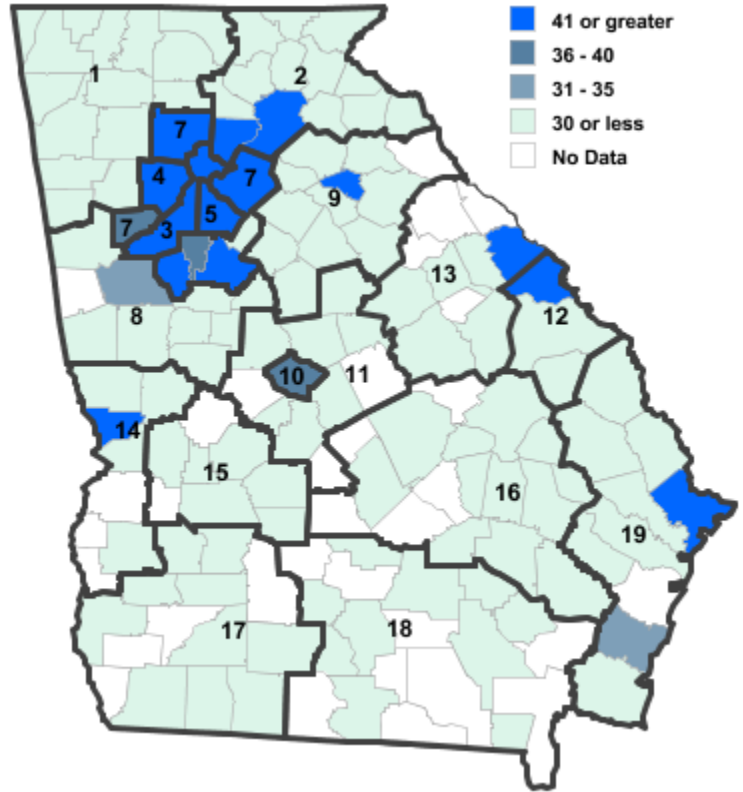
Annual Industry Averages from QCEW 2020

NAICS 61 : Educational Services

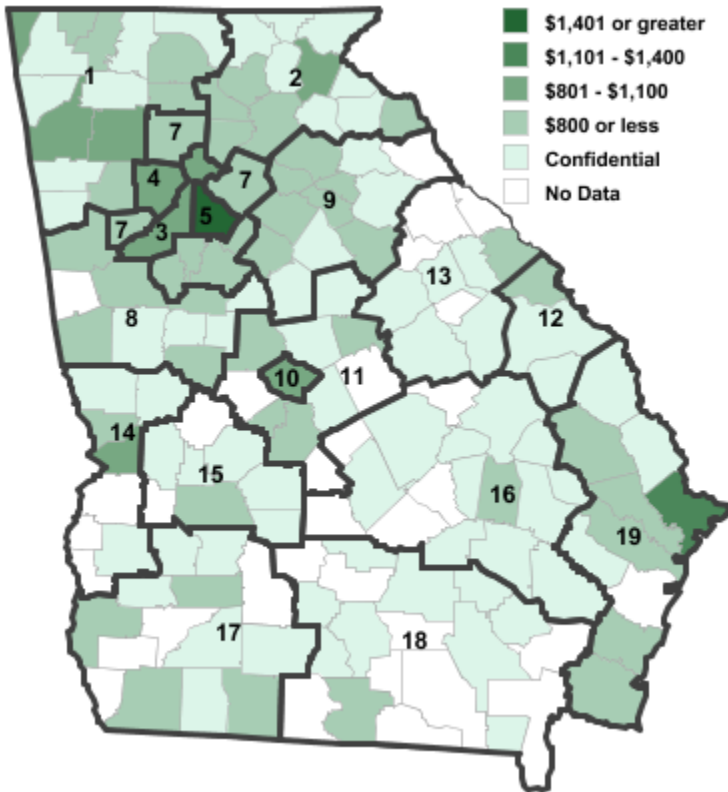
Employment



Establishments



Weekly Wages



Area

Establish- Employ- Weekly
ments ment Wages

Local Workforce Development Areas

| | | | | |
|----|---------------------------|-----|--------|---------|
| 1 | Northwest Georgia | 116 | 2,035 | \$862 |
| 2 | Georgia Mountains | 203 | 4,653 | \$589 |
| 3 | City of Atlanta | 780 | 17,077 | \$1,069 |
| 4 | Cobb County | 379 | 3,884 | \$803 |
| 5 | DeKalb County | 344 | 19,207 | \$1,961 |
| 6 | Fulton County | 780 | 17,077 | \$1,069 |
| 7 | Atlanta Regional | 669 | 6,992 | \$702 |
| 8 | West Central Georgia | 87 | 1,742 | \$624 |
| 9 | Northeast Georgia | 154 | 2,585 | \$529 |
| 10 | Macon-Bibb | 37 | 2,269 | \$1,027 |
| 11 | Middle Georgia | 49 | 617 | \$594 |
| 12 | Central Savannah River | 48 | 806 | \$771 |
| 13 | East Central Georgia | 61 | 802 | \$522 |
| 14 | Lower Chattahoochee | 56 | 1,001 | \$670 |
| 15 | Middle Flint | 13 | 238 | \$591 |
| 16 | Heart of Georgia-Altamaha | 31 | 1,177 | \$341 |
| 17 | Southwest Georgia | 53 | 1,211 | \$644 |
| 18 | Southern Georgia | 47 | 595 | \$560 |
| 19 | Coastal Georgia | 144 | 4,044 | \$1,090 |

Counties with largest values

| | | | | |
|-----|--------|-----|--------|---------|
| 89 | DeKalb | 344 | 19,207 | \$1,961 |
| 121 | Fulton | 780 | 17,077 | \$1,069 |

Note: *** Confidential - Industry group does not meet criteria for disclosure