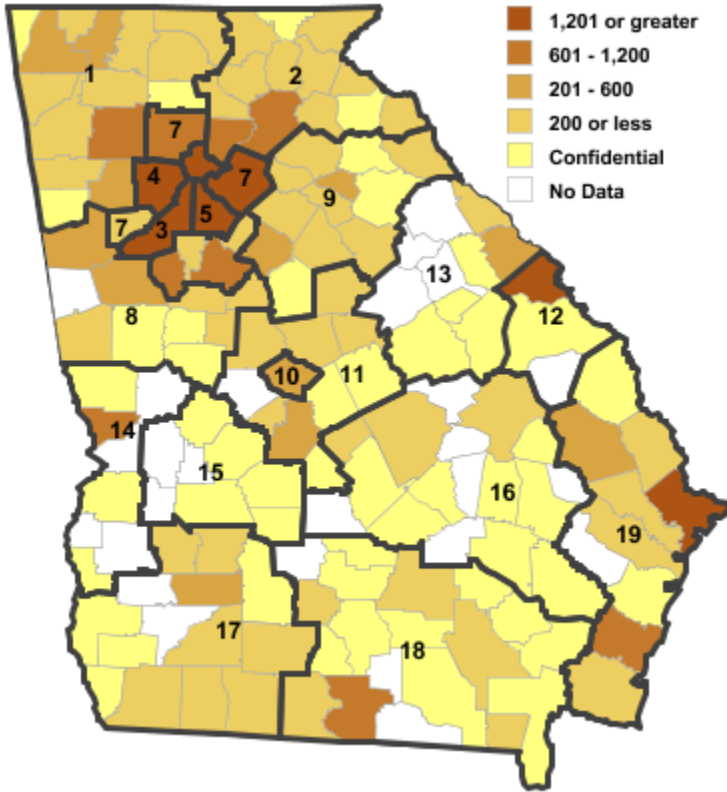
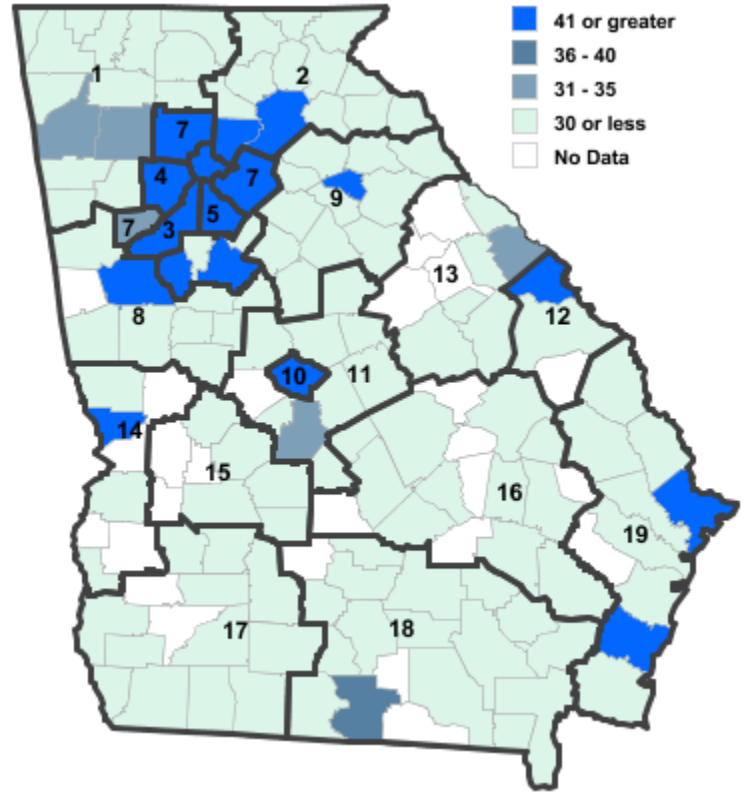


Annual Industry Averages from QCEW 2020 NAICS 71 : Arts, Entertainment, and Recreation

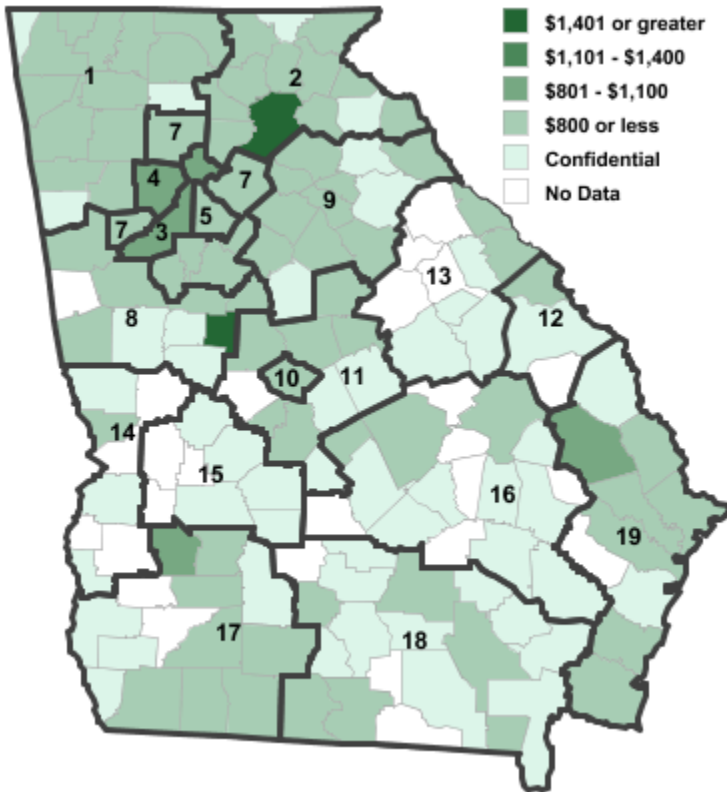
Employment



Establishments



Weekly Wages



Area

Establish- Employ- Weekly ments ment Wages

Local Workforce Development Areas

1	Northwest Georgia	211	2,266	\$458
2	Georgia Mountains	268	2,904	\$2,308
3	City of Atlanta	884	12,525	\$873
4	Cobb County	357	4,184	\$1,061
5	DeKalb County	318	2,720	\$570
6	Fulton County	884	12,525	\$873
7	Atlanta Regional	748	6,310	\$462
8	West Central Georgia	120	1,134	\$407
9	Northeast Georgia	196	1,362	\$408
10	Macon-Bibb	53	486	\$434
11	Middle Georgia	75	716	\$348
12	Central Savannah River	69	1,370	\$758
13	East Central Georgia	48	391	\$395
14	Lower Chattahoochee	78	894	\$486
15	Middle Flint	11	54	\$249
16	Heart of Georgia-Altamaha	39	250	\$336
17	Southwest Georgia	104	587	\$419
18	Southern Georgia	84	987	\$311
19	Coastal Georgia	284	3,358	\$578

Counties with largest values

121	Fulton	884	12,518	\$873
139	Hall	74	783	\$7,352

Note: *** Confidential - Industry group does not meet criteria for disclosure